



**WISDOM**

Interior

# WISE

Interior



**“The most reliable way to anticipate  
the future is to understand the present.”**

- John Naisbitt, Megatrends



# WISE

Welcome to Wise, where exquisite design meets the art of luxury living. As a premium interior design company, we specialize in transforming your spaces into captivating, functional, and awe-inspiring environments.

Our mission is to create interiors that reflect your unique personality, lifestyle, and aspirations while adhering to the highest standards of quality and sophistication. At Wise, we understand that your home or workspace is a reflection of who you are, and we take pride in crafting bespoke designs that speak to your individuality. Our team of talented and experienced interior designers, architects, and craftsmen collaborate closely with you to turn your vision into a reality. Whether you seek a timeless and classical ambiance, a cutting-edge modern aesthetic, or a fusion of styles that defines your tastes, we have the expertise and creativity to bring your dreams to life.



**ANIRUDDHA  
NAFREY**

The Principal Architect Of Wise Mr. Aniruddha Nafrey Is An Alma Mater Of India's Premium And World's Recognized Architectural Institution-Sir J. J. School Of Architecture In Mumbai. He Underwent Training With Leading Architects & Interior Designers For More Than 12 Years Before Setting Up This Company In 2008.

He Is Registered With The Council Of Architects New Delhi. Professional Bodies Such As Indian Indian Institute Of Architects (Ia); Indian Institute Of Interior Designing (Ii) And Council Of Architecture (Coa) Continue To Benefit From Aniruddha's Contribution. He Keeps Himself Abreast With Evolution Of Techniques, Products, Thoughts, Ancestral Abode In Need Of Rebuilding.



**ABHIJEET  
DESHMUKH**

Abhijeet Brings Over 20 + Years Of Expertise To Wise, Shaping Exceptional Interiors That Blend Elegance With Functionality. With A Degree Of Architect From University Of Pune, His Career Began With Cultivating A Passion For Creating Bespoke Residential And Dynamic Commercial Spaces.

Abhijeet's Champions A Collaborative Approach, Ensuring Each Project Reflects Clients' Unique Visions And Lifestyle. Renowned For Their Innovative Designs And Attention To Detail, They Continually Push Boundaries In The Industry. Beyond Design Abhijeet Has Is Dedicated To Pmc, Executing The Projects With Infusing Creativity And Collaborations. Discover How We Elevate Interiors To Extraordinary Heights.



**ABHAY  
BHOSALE**

Abhay And Kiran Have Been Working On Projects Of Varying Scales Based On Sustainable Low Carbon Developmental Models, With Architecture As A Tool Of Making More Meaningful Communities.

They Have A Vast Experience Of More Than Two Decades, Of Working On Projects Such As Mass Housing, Master Planning For Integrated Townships, Ites And It Sez's, Amusement And Hospitality Destinations, Core City Revitalisation And Urban Design For Urban Spaces And Plazas, High-rise Residential And Mixed Use Redevelopments, Public And Academic Institutions, Retail Developments And Corporate Buildings And More.



**KIRAN KALE**

# Why Wise

- Unique design philosophy
- Innovative technology
- Sustainability and green practices
- Customization
- Innovative use of materials
- Art and artisanship
- Strong portfolio
- Exceptional project management:
- Affordable solutions for every kind of budget
- On-time project delivery

**40+** years  
Experience

**150+**  
Corporate offices

**15+**  
Sales pavilion

**300+**  
No. of clients

# Wise Offerings



# Commercial offices

## Work Wise

Work place environment plays an important role in defining culture as well it impacts workplace productivity and efficiency to a large extent. Spaces can translate the brand ethos, spaces can influence, inspire and motivate.

## Benefits

- Energy efficient designs
- Saving through optimization
- Adherence to company standards and guidelines
- Occupational alignment approach
- Ergonomically intelligent spaces
- Inclusive designs
- Complete brand and culture alignment
- Capex spread

## Offering



Corporate offices



IT offices



Industrial office



Retail

# SIMPLE OAK

## COMMERCIAL OFFICE

The office interior combines modern design with a warm, natural touch through a white and wooden theme. The walls are painted in white, creating a bright and airy environment, while wooden accents, such as sleek desks, shelving units, and flooring, introduce warmth.

Minimalist furniture with clean lines enhances the contemporary feel, and large windows allow plenty of natural light to flood the space. Subtle wooden paneling on feature walls adds elegance.

## PROJECT SPECIFICATIONS

### LOCATION

Nariman Point, Mumbai

### AREA

7500 Square Feet

### COMPLETION

2023



















# GIA

## CORPORATE OFFICES

The office interior features a sophisticated blend of modern design and natural warmth. Rich wooden accents line the walls and flooring, while sleek, minimalist furniture in neutral tones adds elegance. Glass desks, ergonomic chairs, and subtle lighting create a refined yet comfortable atmosphere, perfect for both work and relaxation.

## PROJECT SPECIFICATIONS

### LOCATION

BKC

### AREA

1,00,000 Square Feet

### COMPLETION

2019





# SKYLINE SUITES

## CORPORATE OFFICES

The office interior showcases a modern design with a crisp white and blue color scheme, creating a fresh and dynamic atmosphere. The walls feature subtle fluting patterns in a soft white, adding texture and depth to the space.

Blue accents are incorporated through furniture, including sleek desks and ergonomic chairs, alongside decorative elements like curtains and artwork. The lighting is bright, with natural light streaming through windows.

## PROJECT SPECIFICATIONS

### LOCATION

One Lodha Place, Mumbai

### AREA

2000 Square Feet

### COMPLETION

2024















# HERITAGE MODERN

## CORPORATE OFFICES

A seamless blend of timeless charm and contemporary sophistication, Heritage Modern embraces rich wooden interiors, clean lines, and refined details. Natural textures, warm tones, and subtle metallic accents create a space that feels both classic and cutting-edge, offering a perfect balance of tradition and modernity.

## PROJECT SPECIFICATIONS

### LOCATION

Mundhwa, Pune

### AREA

6500 Square Feet

### COMPLETION

2019





# URBAN LUXE

## CORPORATE OFFICES

A sophisticated fusion of modern aesthetics and refined luxury, Urban Luxe combines sleek lines, premium materials, and subtle metallic accents. Neutral tones, polished surfaces, and ambient lighting create a workspace that is both stylish and functional, balancing contemporary elegance with a dynamic urban edge

## PROJECT SPECIFICATIONS

### LOCATION

Chinchwad, Pune

### AREA

9579 Square Feet

### COMPLETION

2020







# MAHARAIL

## CORPORATE OFFICES

The office boasts a sleek, contemporary design with a monochromatic grey palette. Clean lines define the space, complemented by minimalist furniture and subtle textures. The streamlined desks, ergonomic chairs, and modern lighting fixtures create a professional yet stylish environment, fostering focus and productivity in a refined, understated setting



## PROJECT SPECIFICATIONS

### LOCATION

MIRDC pune

### AREA

15,000 Square Feet

### COMPLETION

2021







# GILDED OFFICES

## CORPORATE OFFICES

The office interior features a sleek, modern design with a white and beige color scheme that exudes a calm, professional atmosphere. The walls painted in soft white, complemented by beige accents on furniture and decor

Minimalist desks with clean lines are paired with ergonomic chairs, while large windows allow natural light to flood the space. Storage units are neatly integrated, and soft textures like beige rugs and cushions add warmth.

## PROJECT SPECIFICATIONS

### LOCATION

One Lodha Place, Mumbai

### AREA

1800 Square Feet

### COMPLETION

2024











# ZENITH WORKSPACE

## CORPORATE OFFICES

The office interior combines modern design with a warm, natural touch through a white and wooden theme. The walls are painted in white, creating a bright and airy environment, while wooden accents, such as sleek desks, shelving units, and flooring, introduce warmth.

Minimalist furniture with clean lines enhances the contemporary feel, and large windows allow plenty of natural light to flood the space. Subtle wooden paneling on feature walls adds elegance.

## PROJECT SPECIFICATIONS

### LOCATION

Lodha Supremus, Mumbai

### AREA

1500 Square Feet

### COMPLETION

2019







# BOTANICAL ESTATES

## CORPORATE OFFICES

The office interior features a sleek, modern design with a white and beige color scheme that exudes a calm, professional atmosphere. The walls painted in soft white, complemented by beige accents on furniture and decor

Minimalist desks with clean lines are paired with ergonomic chairs, while large windows allow natural light to flood the space. Storage units are neatly integrated, and soft textures like beige rugs and cushions add warmth.

## PROJECT SPECIFICATIONS

### LOCATION

Lodha One Place, Mumbai

### AREA

1800 Square Feet

### COMPLETION

ONGOING







## CURVED HUB

### CORPORATE OFFICES

The office interior combines modern design with a warm, natural touch through a white and wooden theme. The walls are painted in white, creating a bright and airy environment, while wooden accents, such as sleek desks, shelving units, and flooring, introduce warmth.

Minimalist furniture with clean lines enhances the contemporary feel, and large windows allow plenty of natural light to flood the space. Subtle wooden paneling on feature walls adds elegance.



## PROJECT SPECIFICATIONS

### LOCATION

Lodha Supremus, Mumbai

### AREA

1500 Square Feet

### COMPLETION

2019





## GUILDED OFFICES

### CORPORATE OFFICES

The office exudes sophistication with a beige color scheme complemented by sleek, modern furniture. Subtle gold accents in lighting fixtures, frames, and decor add a touch of luxury. The clean lines and neutral tones create a calm, professional atmosphere, while the gold details elevate the space with elegance and warmth.

### PROJECT SPECIFICATIONS

#### LOCATION

Iodha one place, mumbai

#### AREA

1800 Square Feet

#### COMPLETION

2024





# IVORY & EMBER

## HOSPITALITIES

The office showcases a serene white palette, highlighted by stunning wooden fluting accents along the walls. The blend of light, airy tones with natural wood textures creates a refined, contemporary atmosphere. Sleek, minimalist furniture complements the design, offering a calm yet sophisticated environment ideal for focused work and creativity.

## PROJECT SPECIFICATIONS

### LOCATION

Iodha one place, mumbai

### AREA

1800 Square Feet

### COMPLETION

2024





# RESEARCH AND DEVELOPMENT PARK

## LOBBY DESIGN

The lobby exudes modern elegance, with crisp white walls and floors that reflect the natural light pouring in from large windows. Soaring ceiling heights create a sense of openness and grandeur, while warm cove lighting gently illuminates the space, adding a welcoming glow. Minimalist furniture and sleek accents enhance the contemporary aesthetic, offering a sophisticated yet inviting atmosphere. The overall design combines brightness, warmth, and tranquility

## PROJECT SPECIFICATIONS

### LOCATION

Iodha one place, mumbai

### AREA

1800 Square Feet

### COMPLETION

2024



# LUXE HUB

## ADVOCATE OFFICE

The office features a modern design with natural wooden elements integrated into the walls and furniture, creating a warm, inviting atmosphere. Cream-colored accents complement the wood, enhancing the space's elegance and harmony. Sleek, minimalist furniture and soft lighting provide a balance of sophistication and comfort for a productive environment.

## PROJECT SPECIFICATIONS

### LOCATION

Bandra, Mumbai

### AREA

20,000 Square Feet

### COMPLETION

2019





# Retail

Our retail design solutions blend functionality with aesthetic appeal, creating immersive shopping experiences that enhance brand identity and customer engagement. From boutique stores to large-scale commercial spaces, we craft visually striking and highly functional interiors that optimize layout, lighting, and materials to drive sales and customer satisfaction. Each project is tailored to reflect the unique essence of the brand while ensuring a seamless and enjoyable shopping journey.

## Benefits

- **Enhanced Brand Identity** – Creates a unique and engaging shopping experience that aligns with the brand.
- **Optimized Layout & Flow** – Maximizes space utilization for better customer movement and product visibility.
- **Increased Sales & Engagement** – Thoughtfully designed interiors encourage longer stays and higher purchases

## Offering



Corporate offices



IT offices



Industrial office



Retail

# ROYAL ENFIELD

## RETAIL SHOWROOM

### PROJECT SPECIFICATIONS

**LOCATION**  
Worli, Mumbai

**AREA**  
1500 Square Feet

**COMPLETION**  
2019



**GAS**

RETAIL SHOWROOM

**PROJECT SPECIFICATIONS**

**LOCATION**

BANDRA, MUMBAI

**AREA**

1500 Square Feet

**COMPLETION**

2019



# APPLE

## RETAIL SHOWROOM

### PROJECT SPECIFICATIONS

#### LOCATION

NASHIK

#### AREA

1500 Square Feet

#### COMPLETION

2025



**TAGHeuer**

RETAIL SHOWROOM

**PROJECT SPECIFICATIONS**

**LOCATION**

BANDRA, MUMBAI

**AREA**

1500 Square Feet

**COMPLETION**

2025



# GIANT

RETAIL SHOWROOM

## PROJECT SPECIFICATIONS

### LOCATION

BANDRA, MUMBAI

### AREA

3500 Square Feet

### COMPLETION

2017



# ASICS

RETAIL SHOWROOM

## PROJECT SPECIFICATIONS

### LOCATION

LOWER PAREL, MUMBAI

### AREA

2500 Square Feet

### COMPLETION

2014



**NIKE**

RETAIL SHOWROOM

**PROJECT SPECIFICATIONS**

**LOCATION**

BANDRA, MUMBAI

**AREA**

1500 Square Feet

**COMPLETION**

2014



# ESPRIT

RETAIL SHOWROOM

## PROJECT SPECIFICATIONS

### LOCATION

LOWER PAREL, MUMBAI

### AREA

1500 Square Feet

### COMPLETION

2019



# SWATCH

RETAIL SHOWROOM

## PROJECT SPECIFICATIONS

### LOCATION

LOWER PAREL, MUMBAI

### AREA

1200 Square Feet

### COMPLETION

2015



**CAT**

RETAIL SHOWROOM

**PROJECT SPECIFICATIONS**

**LOCATION**

MUMBAI

**AREA**

1500 Square Feet

**COMPLETION**

2013



# REEBOK

RETAIL SHOWROOM

## PROJECT SPECIFICATIONS

### LOCATION

Phenix Mall

### AREA

1800 Square Feet

### COMPLETION

2013



# Bespoke High-End Residential

## Luxury Wise

Work place environment plays an important role in defining culture as well it impacts workplace productivity and efficiency to a large extent. Spaces can translate the brand ethos, spaces can influence, inspire and motivate.

## Benefits

- Energy efficient designs
- Saving through optimization
- Adherence to company standards and guidelines
- Occupational alignment approach
- Ergonomically intelligent spaces
- Inclusive designs
- Complete brand and culture alignment
- Capex spread

## Offering



Ultra luxurious high rise apartments



Penthouses



High-end interior

## CLASSIQUE GREIGE

### NEO-CLASSICAL AND MODERNIST

The apartment showcases a refined gray and white theme, elegantly complemented by brass accents. This harmonious design creates a modern, inviting atmosphere throughout the space, enhancing both comfort and sophistication in every room.

Design theme featuring grey, white, and brass coudes modern el- egance. Soft grey tones provide a calming backdrop, while crisp white adds brightness and airiness. Brass accents introduce warmth and sophistication, creating a styl- ish contrast that enhances the overall aesthetic, making spaces feel both inviting and luxurious.

### PROJECT SPECIFICATIONS

#### LOCATION

Lodha World Towers, Mumbai

#### AREA

3800 Square Feet

#### COMPLETION

2024













# MARBLE AND BRASS

## HIGH-END INTERIORS

This interior design seamlessly combines the elegance of marble and the warmth of brass, creating a sophisticated, timeless atmosphere. The marble surfaces, with their natural veining, offer a luxurious backdrop, while brass accents add touch of opulence. The use of marble for floors, countertops, and wall panels creates a sense of spaciousness and continuity, while brass light fixtures, furniture details, and decor pieces introduce a refined contrast.

## PROJECT SPECIFICATIONS

### LOCATION

World Towers, Mumbai

### AREA

2000 Square Feet

### COMPLETION

2013















# GREY ESSENCE

## HIGH-END INTERIORS

The lobby features a sophisticated grey color scheme, creating a modern and sleek atmosphere. The space is enhanced with elegant wooden accents, adding warmth and texture to the minimalist design. The combination of cool grey tones and rich wood elements creates a balanced, inviting environment. Soft lighting highlights the contrast between the materials, making the lobby a welcoming and stylish entry point for visitors.

## PROJECT SPECIFICATIONS

### LOCATION

ICC Towers, Mumbai

### AREA

1900 Square Feet

### COMPLETION

2023



















# MODERN ECLAT

## HIGH-END INTERIORS

The interior design embraces a sleek and modern aesthetic with a sophisticated grey palette. Clean lines, minimalist forms, and a harmonious balance of elegance and functionality. Shades of grey dominate walls, floors, and furniture, complemented by subtle accents in metallic tones like chrome or brushed steel for a contemporary edge. Soft textures, such as plush rugs and upholstered seating, add warmth to the monochrome scheme.

## PROJECT SPECIFICATIONS

### LOCATION

World Towers, Mumbai

### AREA

2000 Square Feet

### COMPLETION

2024



























# SALT AND SAND

## HIGH-END INTERIORS

This coastal modern interior combines breezy elegance with contemporary sophistication, evoking the serenity of the ocean. A palette dominated by shades of blue—ranging from soft aquas to deep navy—creates a tranquil ambiance. This coastal modern interior combines breezy elegance with contemporary sophistication. Natural textures like light wood, rattan, and linen add warmth and contrast.



## PROJECT SPECIFICATIONS

### LOCATION

World Towers, Mumbai

### AREA

2000 Square Feet

### COMPLETION

2024









# VERDANT LOFT

## HIGH-END INTERIORS

An interior design theme featuring darker grey tones and plants blends elegance with vitality. Utilize deep greys for walls and furnishings, enhance with diverse indoor plants, and incorporate textured elements and stylish lighting for a cozy, contemporary ambiance.

Aim for a minimalist yet warm design. The use of darker greys combined with lush greenery creates a contemporary aesthetic that feels both elegant and alive. This approach not only modernizes the space but also promotes a healthy indoor environment through the presence of plants.

## PROJECT SPECIFICATIONS

### LOCATION

LOCATION Matunga, Mumbai

### AREA

2000 Square Feet

### COMPLETION

2023









Arriva Designs | ©MKGandhi Studio 2022



Arriva Designs | ©MKGandhi Studio 2022



## BRONZE & EMBER

### HIGH-END INTERIORS

The interior design concept exudes sophistication and warmth, centered around a dark brown and metallic gold palette. Dark brown tones dominate the space, creating a rich and inviting ambiance, while gold accents add

The combination of wood textures in dark brown with sleek metallic gold elements, such as lighting fixtures, hardware, and decorative pieces, ensures a perfect balance of elegance and modernity. Plush furnishings, complemented by subtle lighting, enhance comfort and refinement.

### PROJECT SPECIFICATIONS

#### LOCATION

Lodha World Towers, Mumbai

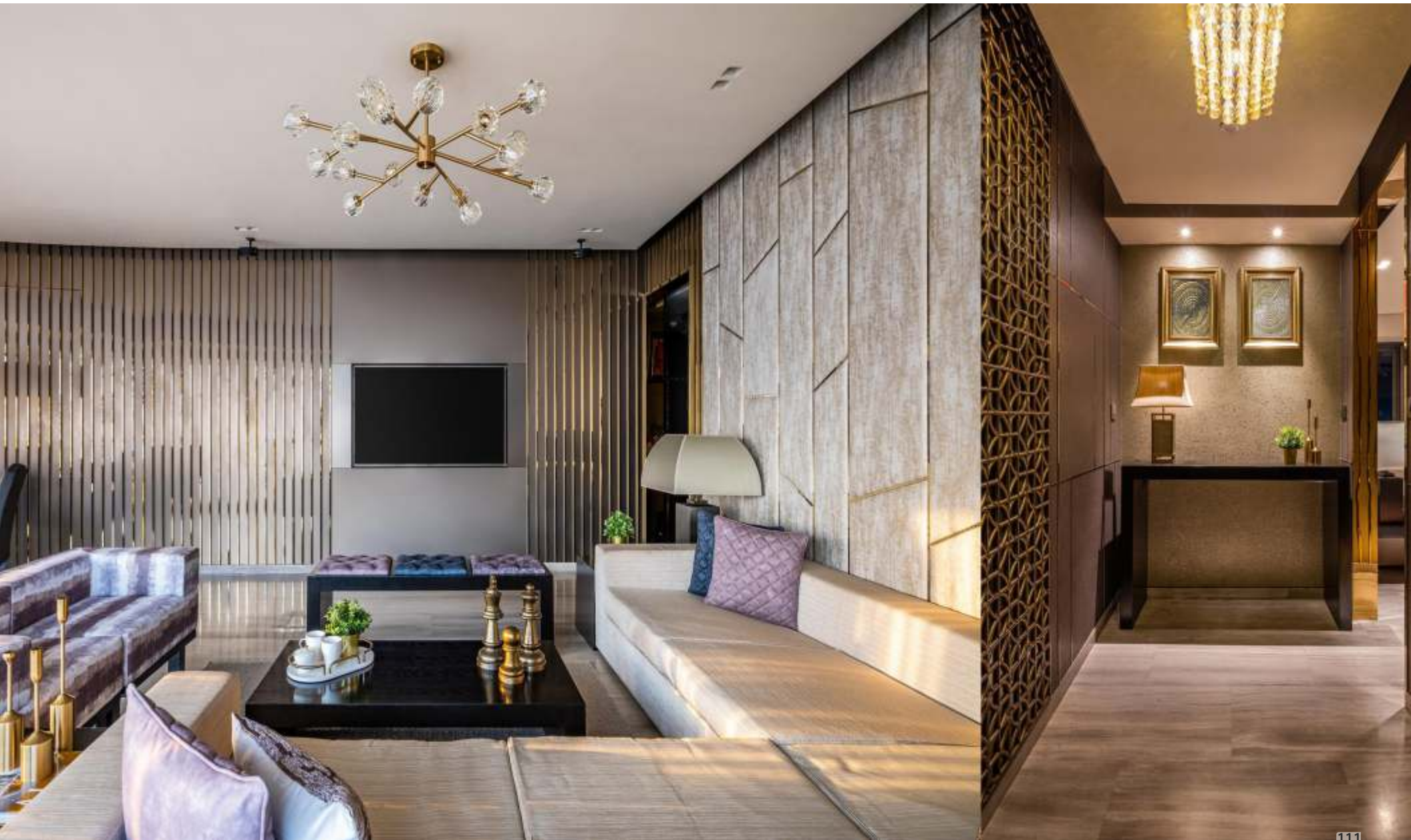
#### AREA

2000 Square Feet

#### COMPLETION

2023

















# OPAL & GOLD

## HIGH-END INTERIORS

This modern interior design seamlessly blends sophistication with warmth through a vibrant color scheme of pink and gold. Clean lines, and open spaces create a contemporary ambiance, while pink tones add a touch of softness and femininity.

Gold accents in lighting fixtures, hardware, and decor infuse luxury and refinement. Plush textiles, such as velvet cushions and sleek metallic finishes, enhance the overall elegance. Natural light emphasizes the interplay of colors, creating a dynamic yet harmonious aesthetic.

## PROJECT SPECIFICATIONS

### LOCATION

Lodha Park, Mumbai

### AREA

2000 Square Feet

### COMPLETION

2023





# COASTAL CALM

## HIGH-END INTERIORS

This coastal modern interior combines breezy elegance with contemporary sophistication, evoking the serenity of the ocean. A palette dominated by shades of blue—ranging from soft aquas to deep navy—creates a tranquil ambiance. This coastal modern interior combines breezy elegance with contemporary sophistication.

Natural textures like light wood, rattan, and linen add warmth and contrast. Clean lines and minimalistic furniture enhance functionality while maintaining a modern aesthetic. Accents like driftwood, seashells, and nautical motifs tie the design to its coastal inspiration.

## PROJECT SPECIFICATIONS

### LOCATION

Lodha World Towers, Mumbai

### AREA

2000 Square Feet

### COMPLETION

2023









# Developers

## Sell Wise

Wise understands how imperative is to sell the inventory in shortest possible time. Creating immerse experiences for you customers not only leave a lasting impression of your brand image but accelerates the sales and makes the selling process an enjoyable journey.

Selling dreams is easier with wise.

## Benefits

- Sell Faster
- Builds better brand image and desired perception
- Better conversion rate
- Lower investment costs
- Helps to sell at premium
- Quick turnaround and faster response

## Offering



Sales pavilion



Show flats & sample flats



Entrance lobbies



Amenity spaces



Club houses

# Sample Flat

Our sample flat designs showcase the perfect blend of style, comfort, and functionality, offering potential buyers a glimpse into their future home. With meticulous attention to detail, we create inviting and aspirational spaces that highlight the best features of the property. Thoughtfully designed layouts, premium finishes, and well-curated furnishings ensure an immersive experience, helping clients visualize the lifestyle and elegance they can expect.

## Benefits

- **Realistic Visualization** – Helps potential buyers envision their future home with a fully designed space.
- **Boosts Sales & Conversions** – Well-designed sample flats make properties more appealing, increasing purchase likelihood.
- **Showcases Quality & Finishes** – Highlights the craftsmanship, materials, and premium design elements of the project.

## Offering



Ultra luxurious high rise apartments



Penthouses



High-end interior

# RUSTIC MODERNE

## SHOW FLAT

This interior design project for building amenities blends modern aesthetics with a luxurious feel. The space features a bold dark color scheme, creating a sophisticated and intimate atmosphere. Rich wooden elements are incorporated throughout, adding warmth and texture while maintaining a sleek, contemporary vibe. High-end finishes and carefully selected furnishings further elevate the space, offering a premium experience. The thoughtful design combines elegance with functionality, making the amenities an ideal setting for relaxation and upscale living.

## PROJECT SPECIFICATIONS

### LOCATION

Goregaon West

### AREA

1,800 Square Feet

### COMPLETION

2022







# TANGERINE GLOW

## SHOW FLAT

The vibrant essence of orange meets the sleek sophistication of modern design, creating a dynamic fusion of warmth and innovation. Picture bold, clean lines infused with the energy of sun-kissed hues, evoking creativity. A modern space bathed in orange becomes more than just structure; it's a statement.

Minimalist furnishings in neutral tones anchor the space, allowing the vibrant color to take center stage. Orange accents—a chair, a statement wall, or lighting—add personality, while reflective surfaces enhance light play. This contemporary aesthetic, blend-form and function

## PROJECT SPECIFICATIONS

### LOCATION

CornerStone, Mumbai

### AREA

3800 Square Feet

### COMPLETION

2024



















# DUNE RADIANCE

## SHOW FLAT

A sleek interplay of modernity and subtle elegance, the theme "Grey and Modern" captures a re-fined aesthetic. Clean lines, muted grey tones, and minimalist forms define spaces that exude sophistication. Textures like polished concrete, brushed steel, and soft textiles enhance the design, creating a balance between industrial and cozy elements.

Expansive glass, subdued lighting, and uncluttered layouts emphasize functionality while maintaining a contemporary allure. Grey serves as the canvas, allowing accent pieces in monochrome or bold hues to shine subtly.

## PROJECT SPECIFICATIONS

### LOCATION

Gorai, Mumbai

### AREA

2000 Square Feet

### COMPLETION

2024









# GLIDED MODERN

## SHOW FLAT

Glided modern - A seamless blend of modern luxury and timeless elegance, Gilded Modern features sleek lines, rich textures, and refined gold accents. Polished surfaces, plush fabrics, and warm metallics create a sophisticated balance, while soft lighting enhances its opulent yet contemporary charm.

## PROJECT SPECIFICATIONS

### LOCATION

Oshiwara, Mumbai

### AREA

2,000 Square Feet

### COMPLETION

2023







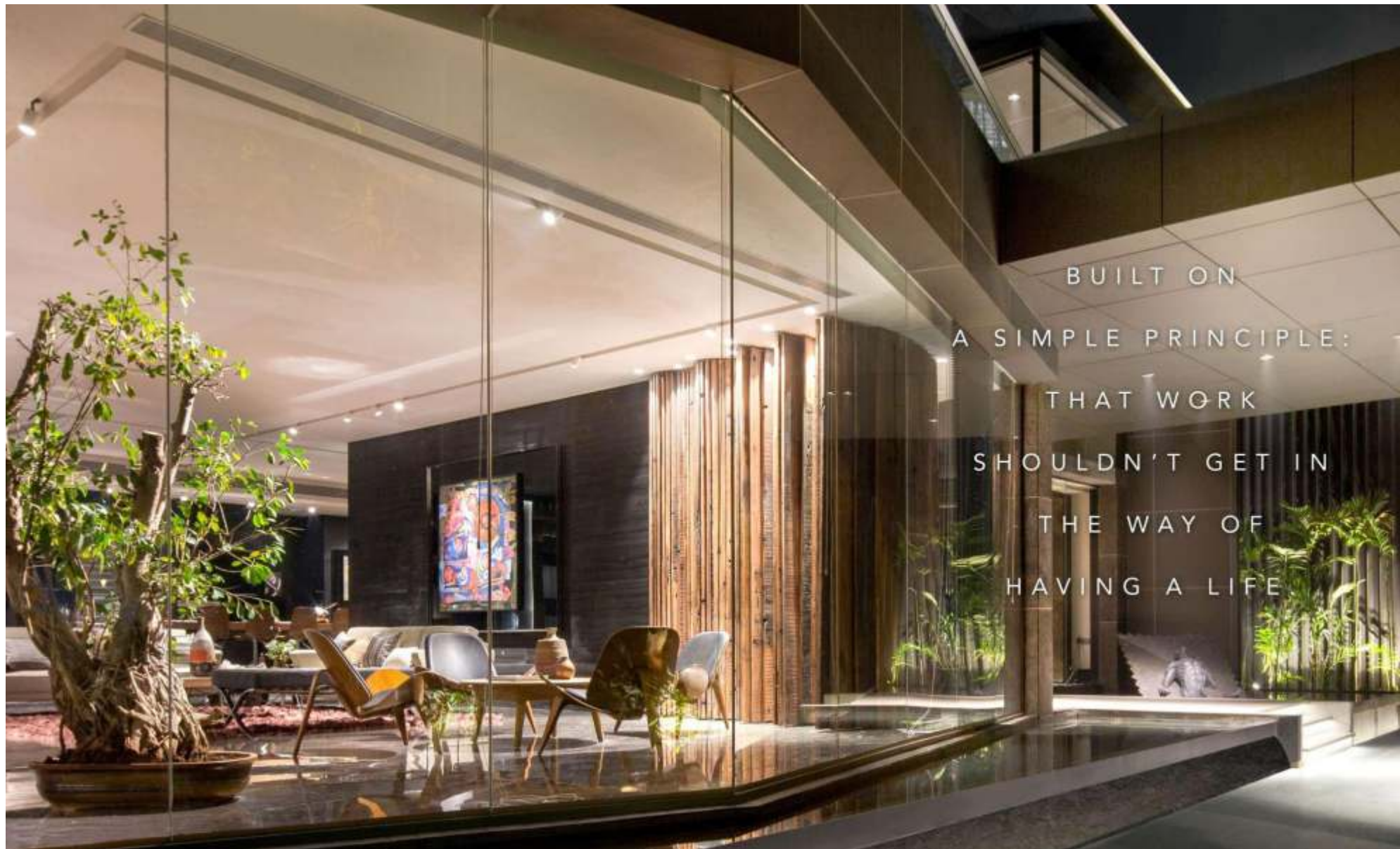




Shadow & Light to create  
a Sonata of Poetic Emotions in harmony



SEASONS BY RUSTOMJEE - INDIA



BUILT ON  
A SIMPLE PRINCIPLE:  
THAT WORK  
SHOULDN'T GET IN  
THE WAY OF  
HAVING A LIFE

CEILING  
Decorative Paint

FEATURE  
Marble wall



SEASONS BY RUSTOMJEE - INDIA





"There are always flowers for those who want to see them,  
as colours are known for those who want to live them"

SEASONS BY RUSTOMJEE - INDIA



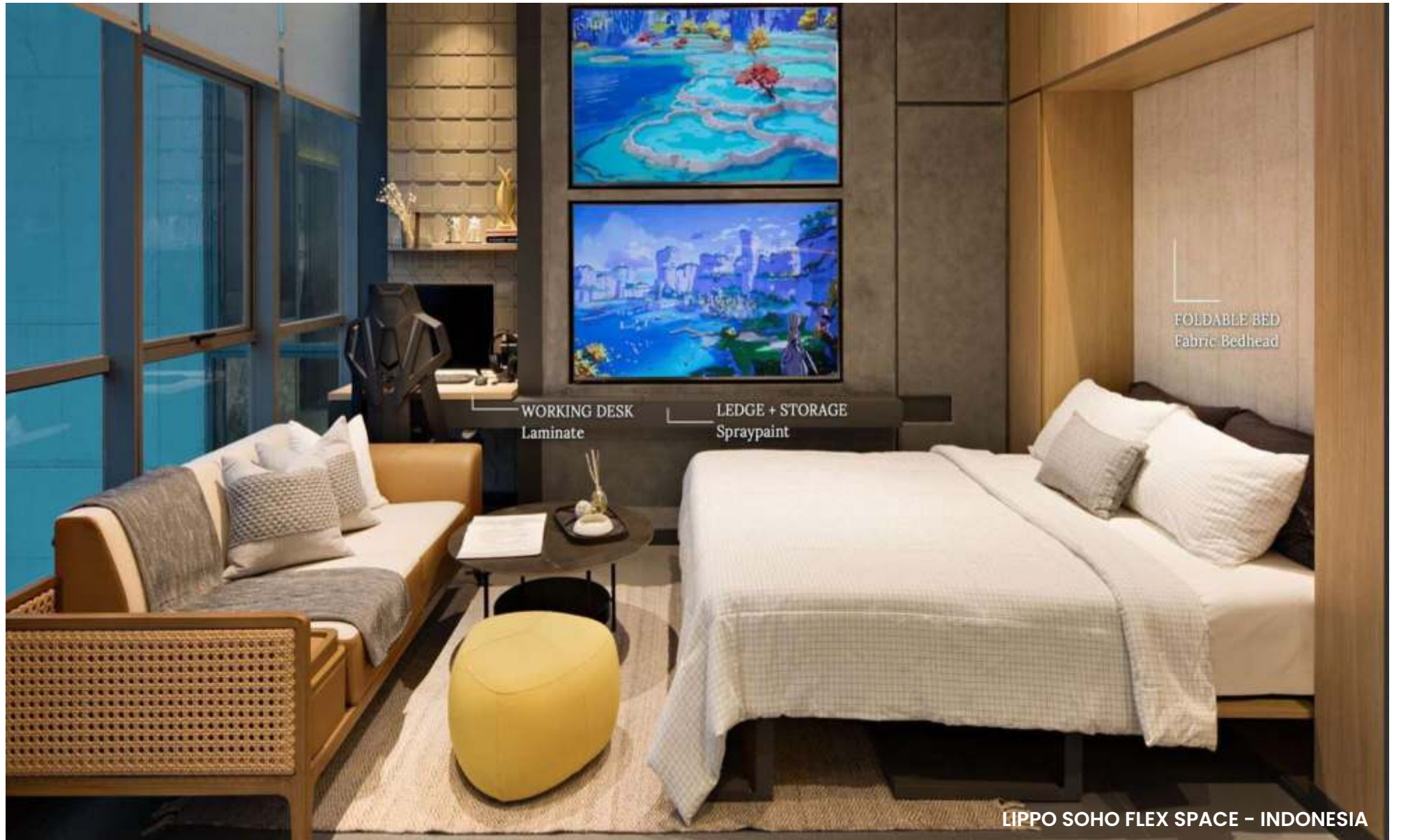
STORAGE  
Laminate

WARDROBE  
Decorative Paint

FOLDING BED  
Laminate

WORKING DESK  
Laminate

LIPPO SOHO FLEX SPACE - INDONESIA



WORKING DESK  
Laminate

LEDGE + STORAGE  
Spraypaint

FOLDABLE BED  
Fabric Bedhead

LIPPO SOHO FLEX SPACE - INDONESIA



SLIDING WINDOW  
Wood stripes

STORAGE  
Wood stripes

SLIDING KITCHEN CABINET  
Spray paint

LIPPO SOHO FLEX SPACE - INDONESIA



SEASONS BY RUSTOMJEE - INDIA



CONCEPT PRESENTATION

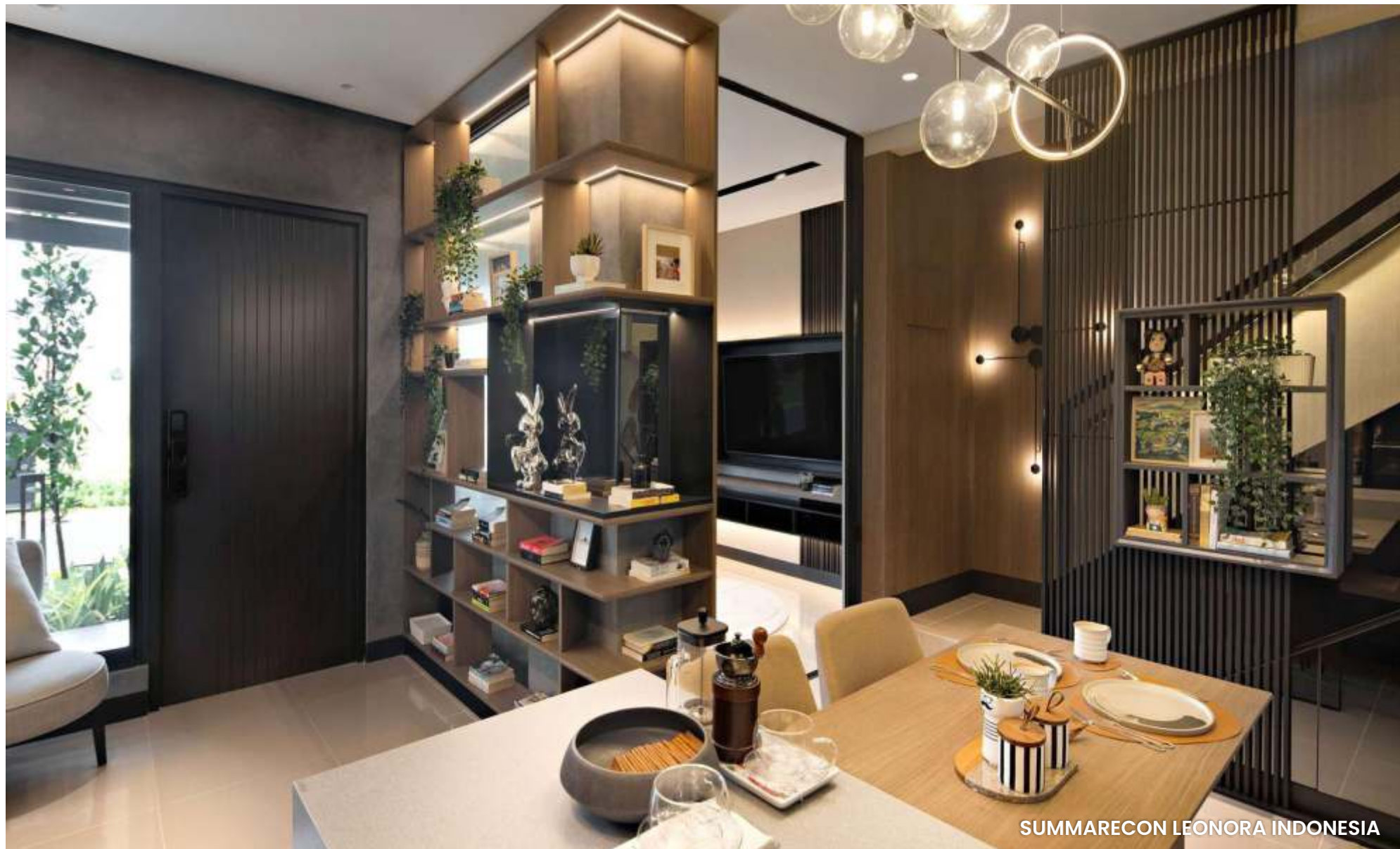
SEASONS BY RULES IN DELHI - INDIA



STORAGE  
Laminate

STAIRCASE RAILING  
Laminate + Metal

LIPPO SOHO FLEX SPACE - INDONESIA



SUMMARECON LEONORA INDONESIA



SUMMARECON LEONORA INDONESIA



SUMMARECON LEONORA INDONESIA



SUMMARECON LEONORA INDONESIA



WINDOW BAY  
Padded Fabric

LADDER  
Metal

CURVED WALL  
Wallpaper

CONCEPT PRESENTATION

COLLINS FOR JINDO



WINDOW BAY  
Padded Fabric

TELEVISION

WRITING BOARD  
Standing Glass

COLLINS FOR INDONESIA

WALL  
Padded Fabric

WARDROBE  
Grey Glass Door

COLLINS FOR INDONESIA

# LIVE ESSENTIALLY

Minimalist yet effective, The Scott innovates on multifunctional furniture to maximize spaces, eliminating congestion of possessions without compromising on primary resident's needs.





ADDITIONAL REST SPACE  
Padded Fabric

WORKING TABLE MODE  
Laminate



SHELVE  
Laminate

HIDDEN CUPBOARD  
Spray Paint

WRITING BOARD  
PU Glass

WINDOW BAY  
Padded Fabric

SLIDING TABLE  
Metal

THE SCOTT RESIDENCE INDONESIA



CONCEPT PRESENTATION

THE SCOTT RESIDENCE - INDONESIA



CONCEPT PRESENTATION

THE SMITH - INDONESIA



CONCEPT PRESENTATION

THE SMITH - INDONESIA

PULL-OUT BED  
Spraypa frame + mattress

STORAGE ON STAIRS  
Laminat



STORAGE CABINET  
Laminate

FEATURE SOFA  
Padded Fabric

WORKING TABLE  
Laminate

THE SMITH – INDONESIA



PULL-OUT BED  
Spraypaint frame + mattress

FOLDING WORKING / DINING TABLE  
Laminate + Metal

THE SMITH - INDONESIA

Designed thoughtfully for Solopreneurs, Home Runner perfectly unifies a comforting home and an office space within a unit, highlighting modern living for passionate hustlers. It is a home that sparks productivity and ease, perfect for those seeking a balanced lifestyle.

















# Amenities

We design luxurious and well-integrated amenity spaces that enhance the overall living experience. From stylish clubhouses and serene landscaped gardens to state-of-the-art fitness centers and relaxing lounges, our designs focus on comfort, functionality, and aesthetics. Each amenity space is thoughtfully planned to foster community engagement, relaxation, and an elevated lifestyle, ensuring a perfect balance of elegance and practicality.

## Benefits

- **Enhances Lifestyle & Comfort** – Offers residents premium spaces for relaxation, fitness, and social interaction.
- **Increases Property Value** – Well-designed amenities make the project more attractive to buyers and investors.
- **Fosters Community Living** – Encourages social engagement and a sense of belonging among residents.

## Offering



Sales pavilion



Show flats & sample flats



Entrance lobbies



Amenity spaces



Club houses

# HARMONY HUB

## AMENITIES

The design of the lobby embodies a modern aesthetic, seamlessly blending sophistication with warmth through the use of wooden elements and a beige color palette. The space features clean lines and minimalist furniture, accentuated by rich wooden paneling that adds texture and a sense of natural elegance.

## PROJECT SPECIFICATIONS

### LOCATION

Dhaisar Mumbai

### AREA

4000 Square Feet

### COMPLETION

2019









# STONE AND SPROUT

## LOBBY DESIGN

The lobby impresses with its double-height ceilings, creating a grand, open atmosphere. The space is beautifully designed with a harmonious white and wooden color scheme, offering a fresh, airy feel. The light tones of the walls and ceiling are complemented by warm wood accents, adding a touch of natural elegance. Expansive windows allow natural light to flood the space, enhancing the sense of openness and creating a welcoming first impression.

## PROJECT SPECIFICATIONS

### LOCATION

Malad Mumbai

### AREA

5,000 Square Feet

### COMPLETION

2020



# URBAN OASIS

## LOBBY DESIGN

The lobby features a sophisticated grey color scheme, creating a modern and sleek atmosphere. The space is enhanced with elegant wooden accents, adding warmth and texture to the minimalist design. The combination of cool grey tones and rich wood elements creates a balanced, inviting environment. Soft lighting highlights the contrast between the materials, making the lobby a welcoming and stylish entry point for visitors.

## PROJECT SPECIFICATIONS

### LOCATION

Malad, Mumbai

### AREA

4000 Square Feet

### COMPLETION

2019





# SERENE TIMBER

## LOBBY DESIGN

The design of the lobby embodies a modern aesthetic, seamlessly blending sophistication with warmth through the use of wooden elements and a beige color palette. The space features clean lines and minimalist furniture, accentuated by rich wooden paneling that adds texture and a sense of natural elegance.

Beige tones dominate the walls and flooring, creating a calming and neutral backdrop that complements the wood's warm hues. Subtle accents in metallic finishes, such as brass or matte black, provide a contemporary edge, while strategically placed lighting highlights the textures.

## PROJECT SPECIFICATIONS

### LOCATION

Dhaisar, Mumbai

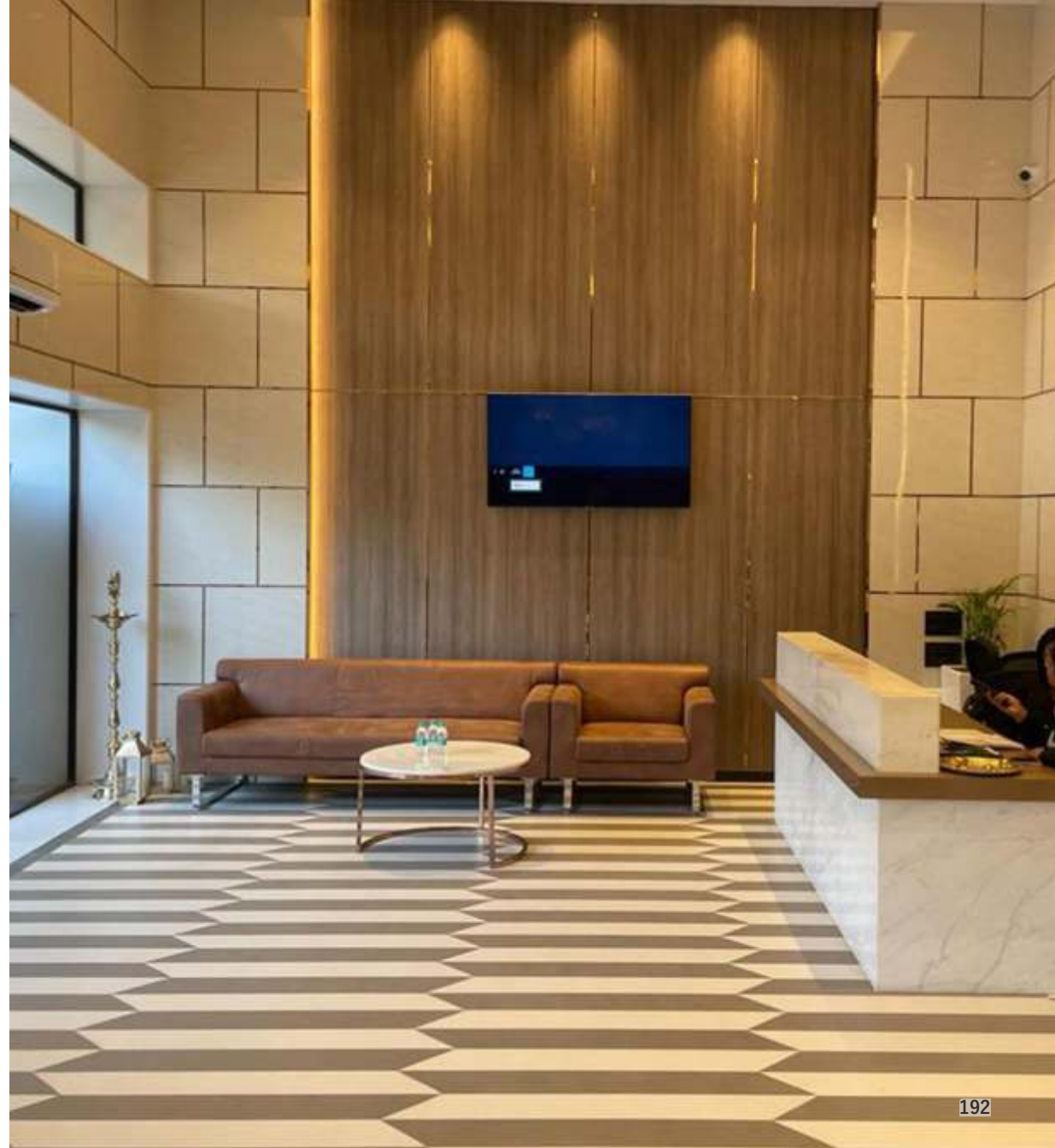
### AREA

4000 Square Feet

### COMPLETION

2019







# WHITE ELEGANCE

## SALES PAVILION

This interior design project for building amenities blends modern aesthetics with a luxurious feel. The space features a bold dark color scheme, creating a sophisticated and intimate atmosphere. Rich wooden elements are incorporated throughout, adding warmth and texture while maintaining a sleek, contemporary vibe. High-end finishes and carefully selected furnishings further elevate the space, offering a premium experience. The thoughtful design combines elegance with functionality, making the amenities an ideal setting for relaxation and upscale living.

## PROJECT SPECIFICATIONS

### LOCATION

Goregoan Mumbai

### AREA

5000 Square Feet

### COMPLETION

2022









IK  
OW  
ARTMENT

THE  
LARGEST  
OFFICE

5 DCs  
in just  
3 years



NEVER  
GIVE  
UP



# CORPORATE HAVEN

## SALES PAVILION

The sales gallery boasts a large, open floor plan that exudes a sense of spaciousness and freedom. The contemporary design is centered around a clean, white aesthetic, with sleek lines and ample natural light. Lush green plants are strategically placed throughout the space, infusing it with a refreshing, organic touch. The combination of minimalist style and natural elements creates an inviting, serene atmosphere perfect for engaging with visitors and showcasing products.



## PROJECT SPECIFICATIONS

### LOCATION

Andheri West, Mumbai

### AREA

5000 Square Feet

### COMPLETION

2022



# WOODEN CURVE

## SALES PAVILION

The sales pavilion interior exudes a sleek modern theme, combining sophistication with functionality. The space is characterized by grey walls that provide a neutral, elegant backdrop, setting the tone for a contemporary aesthetic. Delicate white line patterns traverse the walls and ceilings, creating visual interest and a sense of dynamism without overwhelming the space.

## PROJECT SPECIFICATIONS

### LOCATION

Wakad Pune

### AREA

4000 Square Feet

### COMPLETION

Ongoing





AJWANI



2 BHK FLAT

TRK



# WISE

Interior


---


**Pune Office:** 1st Floor, "Neelkamal", Behind Deendayal Hospital, Off F.C Road, Shivajinagar, Pune - 411004


**Parel, Mumbai office :** -1st Floor, Flat No.5, Plot No.1035, Utkarsha CHS Jivba Atmaram Raul Marg, Off Sayani Road, Prabhadevi, Mumbai-4000255

**Fort, Mumbai office:** 5th FIG ITTS House, Kala Ghoda, Fort, Mumbai - 400001

**Ph.:** +91 98810 94771 | [www.wise-interior.com](http://www.wise-interior.com)

 [Wise interiors](#)

 [Wise Interiors](#)

 [Wise\\_interior](#)

 [www.wise-interior.com](http://www.wise-interior.com)